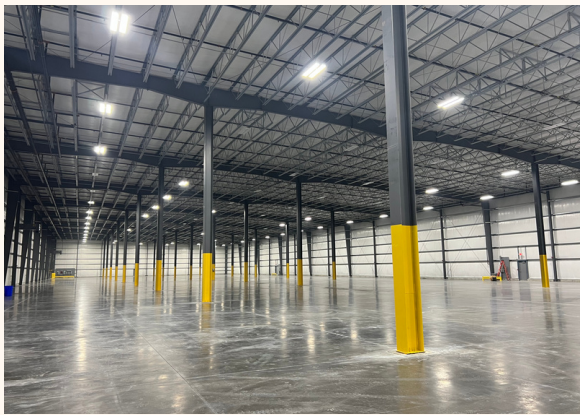


GLENVILLE BUSINESS
& TECH PARK
BUILDING 605

Immediately
AVAILABLE



85,000 Square Foot Pre-Engineered Metal Building

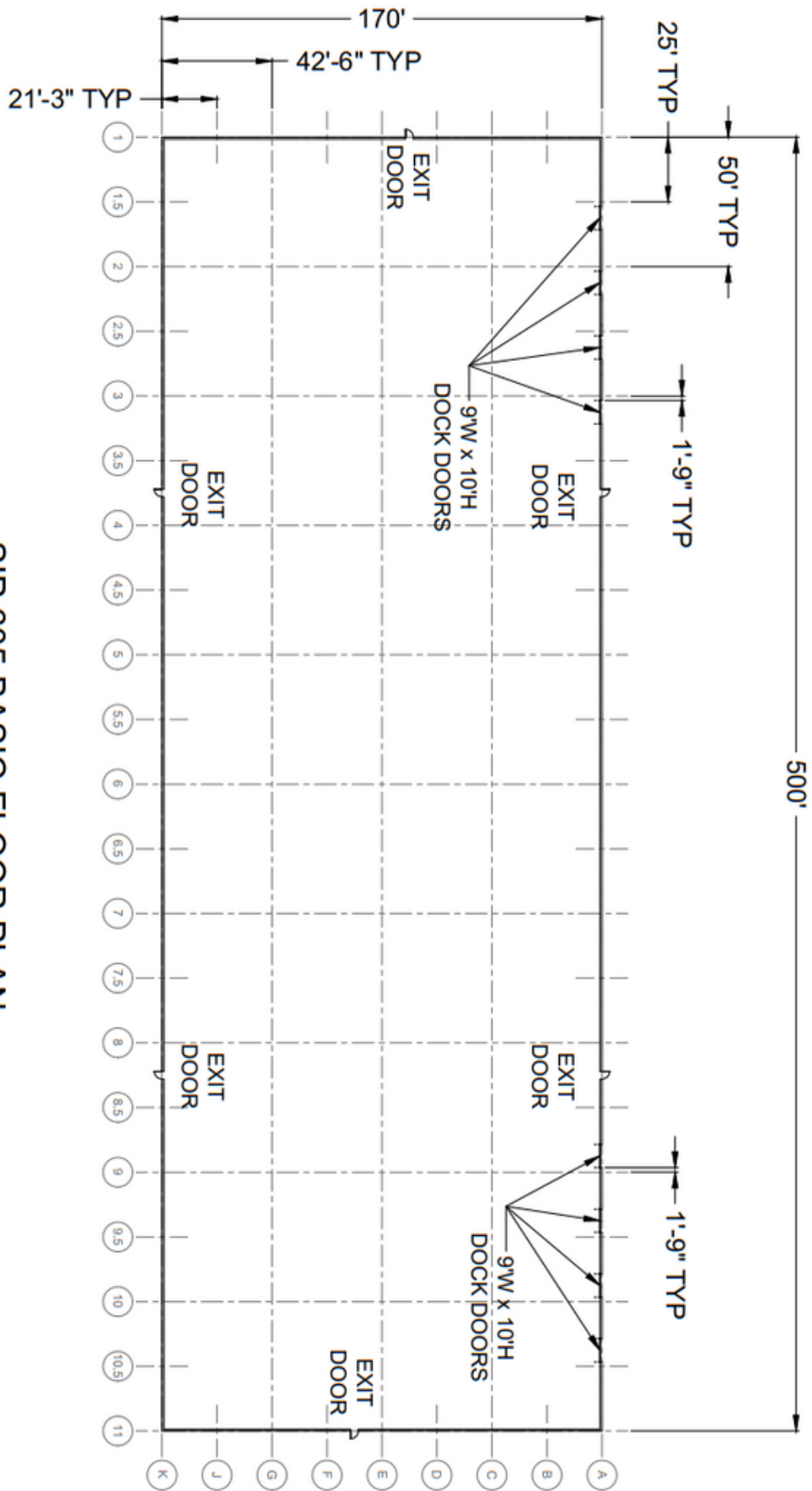
Columns:	42'6" x 50'
Ceiling Heights:	32' Clear
Dock Doors:	(8) 9' x 10' w/ Pit Levelers, Truck Restraints, Dock Seals, Swing Lights
Lighting:	LED High Bay - 400W equivalent
Heat:	Cambridge Gas Fired Heaters
Floors:	8" Polished Concrete Floor
Fire Supression:	Early Suppression Fast Response (ESFR)
Water & Sewer:	Town of Glenville Water -8" Sewer- 6"
Gas & Electric:	National Grid: 600A/480V Electric Service



David Ahl
DAhl@galesi.com
Shannon Muth
SMuth@galesi.com

📞 518-356-4445
📍 220 Harborside Drive
Suite 300 Schenectady, NY
🌐 www.Galesi.com

SIP 605 BASIC FLOOR PLAN
8 O/H DOCK DOORS LOCATED AS SHOWN
6 PEDESTRIAN DOORS LOCATED AS SHOWN



GET IN TOUCH

(518)356-4445

220 Harborside Drive,
 Suite 300
 Schenectady, NY 12305

David Ahl - dahl@galesi.com
 Shannon Muth - smuth@galesi.com



www.Galesi.com